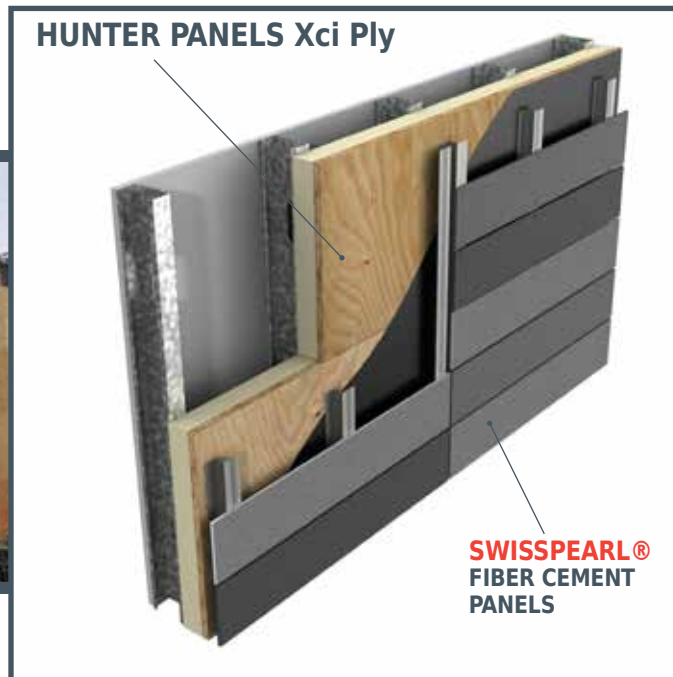


Cladding Corp and Hunter Panels Xci Polyiso

A Continuous Insulation Solution for Exterior Wall Applications



CLADDING CORP

THE 1ST NAME IN RAINSCREEN

888.826.8453

www.claddingcorp.com



HUNTER
CONTINUOUS INSULATION

888.746.1114

www.hunterpanels.com

A NEW APPROACH

For the first time, Hunter Panels, innovators in polyiso rigid insulation, and Cladding Corp, North America's rainscreen solution provider, have developed a complete fiber cement rainscreen wall solution that addresses all aspects of the building envelope using the leading fiber cement cladding panels on the market today - **SWISSPEARL®**.

THE COMPLETE C.I. SOLUTION

Meeting the most current ASHRAE 90.1, IECC, IBC and IRC standards is one of the most critical requirements for designers and installers alike. Hunter Xci Ply's high thermal rigid insulation panel, coupled with an engineered **Cem5** drained and back-ventilated rainscreen assembly provides a complete continuous insulation (ci) solution that allows maximum installation flexibility and industry leading performance.

COMPLIMENTARY PRODUCTS

The Hunter Panels and Cladding Corp partnership delivers a single source rainscreen cladding wall assembly - including the connections of the fiber cement system to the Xci Ply panels and to the backup wall.

CODE COMPLIANCE AND NFPA 285

The combined Hunter Xci Ply and **Cem5** wall assembly can meet ASHRAE 90.1, IBC and IRC standards, and can be used together within numerous NFPA 285 compliant assemblies. Contact Hunter Panels for more details.

Hunter Panels Xci Ply

DESCRIPTION

Hunter Xci Ply is a high thermal rigid insulation panel composed of a closed cell polyisocyanurate foam core bonded to a premium performance coated glass facer on one side and 5/8" or 3/4" fire treated plywood on the other. It is designed for use in commercial wall applications to provide continuous insulation within the building envelope.

FEATURES AND BENEFITS

- Polyiso offers highest R-value per inch of any foam plastic board insulation
- Designed for use in continuous insulation to assist in meeting the most current ASHRAE 90.1, IECC, IBC and IRC standards
- A superior combination of high insulating properties and mechanically attachable surface
- Manufactured with NexGen Chemistry: Contains no CFCs, HCFCs, is Zero ODP, and has virtually no GWP
- Incorporates APA-TECO Rated Exposure Fire Treated Plywood
- Provides improved dimensional stability and fire performance

APPLICATIONS

- Provides continuous insulation (ci) for standard wood frame, FRT wood frame, steel stud, CMU and concrete exterior wall constructions
- Compatible with **SWISSPEARL®** fiber cement panels and **Cem5** rainscreen attachment assemblies.
- Optimal substrate for mechanically attaching cladding materials
- Suitable for many commercial wall assemblies

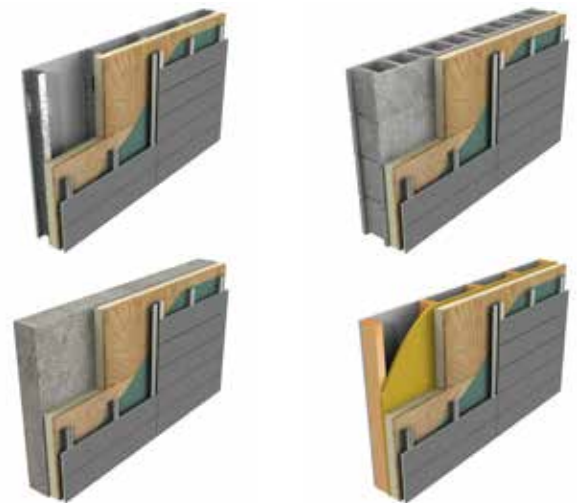
PANEL CHARACTERISTICS

- ASTM C 1289 Type V made with Type II Class 2 foam
- Panel dimensions are 48" x 96"
- Available with FSC® Certified fire-treated plywood (special order)
- Multiple substrate types available: 5/8" or 3/4" Fire Treated Plywood

Hunter Xci Ply Thermal Values		
Thickness* (in)	Thickness* (mm)	R-Value
1.6	41	6.6
2.1	53	9.6
2.6	66	12.7
3.1	79	15.9
3.6	91	19.1

Thermal values as per ASTM C 518 in accordance with ASTM C 1289.

*Thicknesses calculated with 5/8" plywood



Hunter Xci Ply Physical Property Data Chart polyiso foam core only		
Property	Test Method	Value
Compressive Strength	ASTM D 1621	20 psi* min. (138 kPa, Grade 2)
Dimensional Stability	ASTM D 2126	2% linear change (7 days)
Moisture Vapor Permeance	ASTM E 96	<1 perm (57.5ng/(Pa·s·m²))
Water Absorption	ASTM C 209	< 0.1% volume
Service Temperature		-100° to 250° F (-73°C to 122°C)
Resistance to Mold	ASTM D 3273	Passes (10)

*Also available in grade 3 (25 psi)

SWISSPEARL®

For more than 30 years, the Swiss Research and Development teams have continuously expanded their unique expertise regarding core, coloration and application of high-end fiber cement composite façade panels. These huge technological advances are the backbone of the Swiss quality.

SWISSPEARL® air cured fiber cement panels are produced in modern state of the art facilities in Niederurnen (Switzerland) and Vocklabruck (Austria) operated with low energy and high environment consciousness. The proprietary processes pioneered by Switzerland with special surface finishes, ensure optimal behavior and durability of the fully compressed panels.



Cem5/SWISSPEARL®

DESCRIPTION

SWISSPEARL® facades combine boundless diversity of design and long-lasting functional reliability, for the highest living standards. SWISSPEARL® panels are installed in accordance with the ultimate technology of uninterrupted rear ventilation. This fully developed and proven cladding system effectively protects the building structure and with it the whole building from the elements. The panels are rot resistant, incombustible and virtually maintenance free.

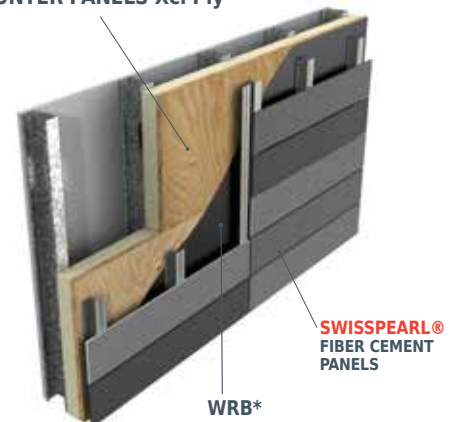
COMPATIBILITY

With various formats in large panels, planks, lap siding and shingles, SWISSPEARL® provides an extensive range of design options, all in maintenance-free finishes. Pairing these fiber cement panels with a **Cem5** subframing system and Hunter's Xci Ply gives both designers and installers a cost effective wall to achieve both thermal and engineering needs, compared to complete stud wall assemblies.

FASTENING

Several factors are involved in the proper fastening of SWISSPEARL® panels and **Cem5** vertical rails to Hunter Xci Ply. Please consult Cladding Corp or Hunter Panels for specific information regarding detailing and fastener type.

HUNTER PANELS Xci Ply



* The location and number of WRB's in the wall assembly are determined by the architect. Contact Hunter Panels for a list of approved WRB's for each assembly.



HHMI Research Campus - Ashburn, VA / WDG Architects



Sempra Energy Trading Company - Stamford, CT / Roger Ferris + Partners



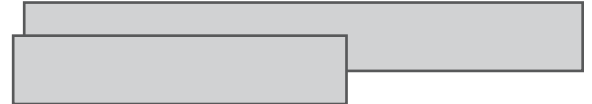
Bridgestone Training Center - Akron, OH / SoL Harris / Day Architects

LARGE FORMAT SWISSPEARL® LARGO means freedom of design without limits. The large-format LARGO panels give facades what they need: a face, individuality, character, texture, color and very importantly, a high effective protective layer.



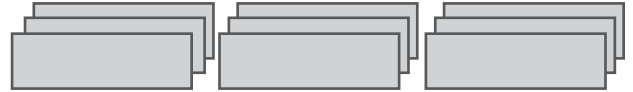
Thickness	Dimensions	Color Lines Available *
8 mm and 12 mm	3040 mm [119.69"] x 1220 mm [48.03"] 2500 mm [98.44"] x 1220 mm [48.03"]	Carat, Reflex, Avera, Nobilis, Planea

PLANK SWISSPEARL® LINEARIS panels are ready-made LARGO panel strips, for installing with open joints. Whether monochrome or multicolored, equal or varying format lengths, with continuous or offset joints - there is an immense scope of different combinations possible.



Thickness	Dimensions	Color Lines Available *
8 mm	1500 mm [59.06"] x 147 mm [5.79"] 1500 mm [59.06"] x 300 mm [11.81"] 2500 mm [98.43"] x 147 mm [5.79"] 2500 mm [98.43"] x 300 mm [11.81"]	Carat, Reflex, Avera, Nobilis, Planea

LAP-SIDING SWISSPEARL's® lap-siding panels provide a slim, elegant stripe shape, that creates a vibrant façade, exciting and unique. MODULA 8mm thick panels delivers medium-sized formats for high-end architecture are available in two different sizes. The CLINAR and CLINAR CLIP (attached mounting clips) 6mm thick panels are part of the unique miniature repertoire and are available in seven different sizes.



Thickness	Dimensions	Color Lines Available *
Modula - 8mm	1500mm [59.06"] x 300mm [11.81"] 2500mm [98.43"] x 300mm [11.81"]	Carat, Reflex, Avera, Nobilis, Planea
Clinar - 6 mm	900mm [35.43"] x 200mm [7.87"] 1200mm [47.24"] x 200mm [7.87"] 900mm [35.43"] x 300mm [11.81"] 1200mm [47.24"] x 300mm [11.81"]	Nobilis, Planea
Clinar Clip - 6mm	1200mm [47.24"] x 360mm [14.17"] 1200mm [47.24"] x 460mm [18.11"] 1200mm [47.24"] x 600mm [23.62"]	Nobilis, Planea

SHINGLE SWISSPEARL® SHINGLE facades have a very special appeal: From a distance they create an elegant color pallet, from up close the shingle patterns add dimension and life. SHINGLES give the façade an unmistakable character. A wide range of different formats and colors allows the implementation of even highly individual creative ideas.

Thickness	Dimensions	Color Lines Available *
4 mm	<ol style="list-style-type: none"> 1. 3 Notched 300 Size: 900mm [35.43"] x 300mm [11.65"] 2. 3 Notched 300 Size: 600mm [23.46"] x 300mm [11.65"] 3. 3 Notched 200 Size: 600mm [23.46"] x 200mm [7.87"] 4. 3 Shark Tooth Size: 600mm [23.62"] x 200mm [7.87"] 5. 5 Notched 150 Size: 600mm [23.62"] x 150mm [5.79"] 6. 6 Notched 150 Size: 600mm [23.62"] x 150mm [5.79"] 7. 6 Scalloped 150 Size: 600mm [23.62"] x 150mm [5.79"] 	Nobilis, Planea

* Please Refer to 2016 Cem5 Color Selection Guide for SWISSPEARL® Panels for color section.