



HUNTER
CONTINUOUS INSULATION

Hunter Panels Xci Foil (Class A)

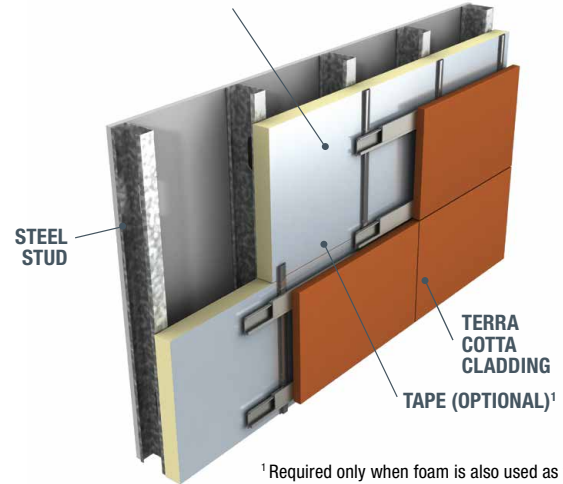
Class A Polyisocyanurate Insulation Manufactured On-Line to Reinforced Foil Facers

Xci Foil (Class A) Thermal Values

Thickness (inches)	Thickness (mm)	R-Value
1.0	25	6.3
1.5	38	9.5
1.6	41	10.1
2.0	51	13.0
2.5	64	16.0
3.0	76	19.0
3.5	89	22.0
4.0	102	25.2

Thermal values as per ASTM C 518 in accordance with ASTM C 1289.

HUNTER PANELS Xci FOIL (CLASS A)



¹ Required only when foam is also used as the WRB

Description

Xci Foil (Class A) is an exterior wall insulation panel composed of a Class A rigid polyisocyanurate foam core manufactured on-line to 15 mil reinforced foil facers on both sides. It is designed for use in commercial wall applications to provide continuous insulation within the building envelope.

Features and Benefits

- Polyiso offers increased R-value per inch vs mineral fiber, XPS or EPS options
- Designed for use in continuous insulation to assist in meeting the most current ASHRAE 90.1, IECC, IBC and IRC standards
- **Can be installed directly on steel studs in a variety of wall assemblies without the need for gypsum sheathing**
- **Flame spread of <25 per ASTM E 84**
- Provides R-Values from 6.3 to 25.2 in a single layer
- Manufactured with NexGen Chemistry: Zero Ozone Depleting Potential (ODP); Contains no CFCs, HCFCs or HFCs; Virtually zero Global Warming Potential (GWP). Use of Xci products helps reduce the carbon footprint of buildings.
- Superior fire performance, durability and dimensional stability

Applications

- Provides continuous insulation (ci) for standard wood frame, FRT wood frame, steel stud, CMU and concrete exterior wall constructions
- Compatible with numerous claddings/finishes: masonry, fiber cement, stucco, terra cotta, mcm, metal, natural stone, stone aluminum

Panel Characteristics

- ASTM C 1289 Type I, Class 1 Grade 3 (25 psi)
- Available in 4' x 8' (1220mm x 2440mm) panels in thickness of 1" (25mm) – 4" (102mm)
- Other sizes are available upon special request – (for example: 16" or 24" width)

Codes and Compliances

- ASTM C 1289
- ASTM E 2178 – less than 0.001 L (s·m²) at 75 Pa
- ASTM E 2357 – no leakage
- ASTM E 283 S – less than 0.04 cfm/ft²
- ASTM E 330 – less than 0.04 cfm/ft²
- ASTM E 331 – Pass, no leakage
- International Building Code Chapter 26 per Class A UL 723 (ASTM E84)
- UL Classified
- DRJ Technical Evaluation Report 1402-01
- Numerous NFPA 285 approved assemblies³
- Numerous UL 263 hourly designs³
- Miami Dade County Product Control Approved
- California Code of Regulations, Title 24, Insulation Quality Standard License #TI-1420
- California Bureau of Furnishings and Home Insulation
- CCMC 13460-L
- CAN/ULC S-704 Type 1, Class 1

³Contact Hunter Panels for details

LEED Potential credits for Polyiso use

- Energy and Atmosphere**
- Optimize Energy Performance
- Materials & Resources**
- Building Life-Cycle Impact Reduction
 - Environment Product Declaration
 - Material Reuse
 - 9% Pre-consumer Recycled Content
 - Construction and Demolition Waste Management
- Indoor Environmental Quality**
- Thermal Comfort

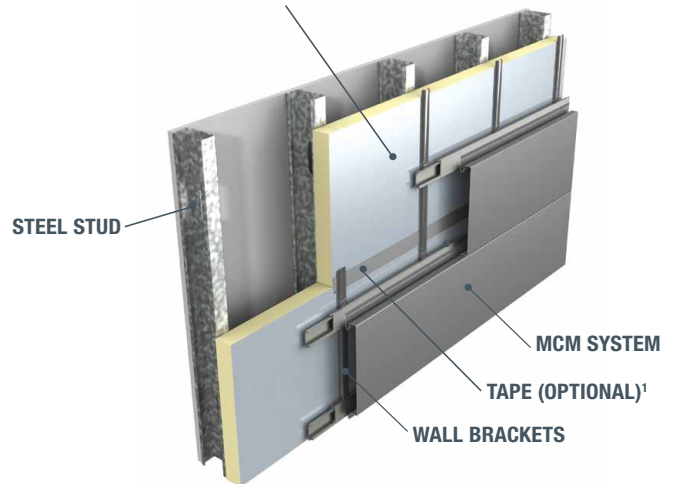
Hunter Panels Xci Foil (Class A)

Class A Polyisocyanurate Insulation Manufactured On-Line to Reinforced Foil Facers

Typical Physical Property Data Chart

Property	Test Method	Value
Compressive Strength	ASTM D 1621	25 psi min. (172 kPa, Grade 3)
Dimensional Stability	ASTM D 2126	2% linear change (7 days)
Moisture Vapor Permeance	ASTM E 96	<0.04 perm
Impact Resistance (Janka Ball Test)	ASTM C 1301	40
Service Temperature		-100° to 250° F (-73°C to 122°C)
Flame Spread Index (foam core)	ASTM E 84	< 25
Smoke Developed (foam core)	ASTM E 84	< 250
Recycled Content		9% pre-consumer

HUNTER PANELS Xci FOIL (CLASS A)



¹Required only when foam is also used as the WRB

Installation

- Xci Foil (Class A) is not structural sheathing; exterior cladding must be attached through to the framing
- Always follow local codes for structural bracing
- Refer to local codes and practices for placement of the WRB in the wall assembly
- Follow cladding manufacturer's recommendation for attachment requirements
- Insulation installation may require separate fasteners or adhesives depending on the exterior cladding attachment
- Adhesives can be used for attachment to CMU, gypsum and concrete
- Metal furring strips can be installed on the exterior, fastened through the insulation to the structural wall to create a drainage plain
- Seams can be taped if required by local code. Foil Tape Ex: CCW's Foil Grip 1402 or equal

Post-Installation Exposure

During the time frame between installation of Xci Foil (Class A) and the application of the finished exterior cladding, it is recommended that a building wrap be applied to the Xci Foil (Class A). If a building wrap has not been specified, ALL UNFACED FOAM EXPOSED TO DIRECT DAYLIGHT (i.e. corners, window and door openings) should be taped with a compatible waterproof tape. When properly installed, Xci Foil (Class A) can remain uncovered up to 180 days. Please contact Hunter Panels for details.

WRB

The incorporation of Weather Resistant Barriers (air, vapor and moisture) is a critical element of a wall assembly. A design professional familiar with local code requirements should specify the selection and placement of any WRB. Furthermore, it is recommended that a hygrothermal analysis of the proposed assembly be conducted to determine the type and locations of a proposed WRB.

Note: The NFPA 285 fire test is an assembly test. The performance of the WRB must also be considered. Please consult Hunter Panels for details and specifications.

Job-Site Storage

Good construction practice dictates that all insulations should be protected from moisture and direct sunlight during job-site storage. Pallets of Hunter Panels Xci Foil (Class A) are double packaged in a UV resistant polyethylene bag. This moisture resistant package is designed for protection from the elements during flat bed shipment from our factories to the job-site. Outdoor storage for extended periods of time requires waterproof tarpaulins and elevated storage above ground level a minimum of 2". Additionally, we recommend slitting the bundle packaging vertically down the center of the two short sides to prevent moisture accumulation within the package.

Warnings and Limitations

Insulation must be protected from open flame. Hunter Panels will not be responsible for specific building design by others, for deficiencies in construction or workmanship, for dangerous conditions on the job site or for improper storage and handling. Technical specifications shown in this literature are intended to be used as general guidelines only and are subject to change without notice. Call Hunter Panels for more specific details.



Hunter Panels | Energy Smart Polyiso | 888.746.1114 | www.hunterpanels.com

New York Illinois Florida Texas Utah Pennsylvania Washington



HUNTER
CONTINUOUS INSULATION