



High Performance Fastening Systems for Hunter Xci Continuous Insulation Products by Rodenhouse Inc.

THERMAL-GRIP® ci PRONG WASHER



APPLICATIONS

- 2" dia. solid cap washer for use with Grip-Deck® ci screws.
- Pre-spotting prongs for easy on-the-wall screw assembly
- Flattens on surface of the insulation without tearing facer
- Maintains air barrier performance

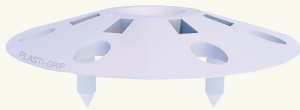
GRIP-DECK® ci SCREW



APPLICATIONS

- Self-drilling or HiLo threads available for steel or wood studs
- Exterior ceramic coating for corrosion resistance
- Lengths available from 1-5/8" – 6"

PLASTI-GRIP® ci PRONG WASHER



APPLICATIONS

- 1-3/4" plastic washer with keyholes
- Pre-spotting prongs for easy on-the-wall screw assembly
- Flexible perimeter reduces tearing

PLASTI-GRIP® PMF ANCHOR



APPLICATIONS

- Insulation attachment to masonry substrates
- Simple installation. Pre-drill hole, then tap flush with hammer
- Plastic design reduces thermal-bridging
- No screws or adhesives required

THERMAL-GRIP® BRICK-TIE WASHER



APPLICATIONS

- For use with Heckmann Pos-I-Tie® and Wire-Bond Sure-Tie® masonry veneer anchoring systems
- 2" dia. washer secures insulation
- Designed to reduce moisture and air infiltration at anchor points

Insulation fastener quantity calculator based on square footage for Xci Foil, Xci Foil (Class A), Xci CG, Xci CG (Class A), Xci 286

Screw/washer spacing for steel or wood studs based on 16"x16" spacing in the field and every 12" around perimeter, doors and windows:

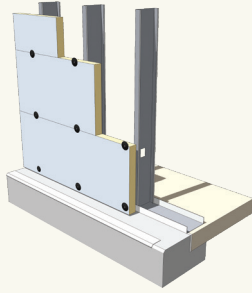
_____ sq. ft. x .875 = _____ fasteners

Plasti-Grip PMF anchors spacing for masonry substrates based on 24"x24" spacing:

_____ sq. ft. x .375 = _____ fasteners

Quantities are for estimating purposes. Actual quantity required may vary depending on door/window openings, design, etc. Penetrations can be reduced if the cladding system will be securing the Xci Polyiso firmly in place.

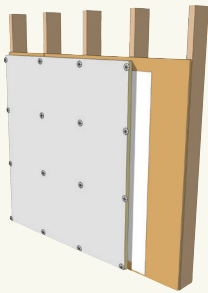
THERMAL-GRIP® ci PRONG WASHER



APPLICATIONS

- Specified fastener spacing of 16" x 16" in the field and every 12" around doors, windows and perimeter
- Pre-spotting prongs for easy "on-the-wall" screw assembly
- Compress washer until flat. Do not overdrive.

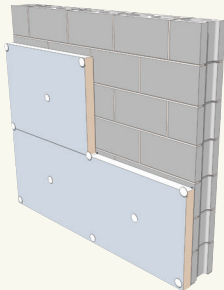
PLASTI-GRIP® ci PRONG WASHER



APPLICATIONS

- Use to attach insulation over a primary air and weather barrier
- Recommended fastener spacing of 16" x 16"
- Pre-spotting prongs for easy "on-the-wall" screw assembly
- Compress washer until flat. Do not overdrive.

PLASTI-GRIP® PMF

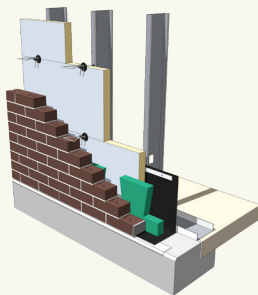


APPLICATIONS

- Recommended fastener spacing of 24" x 24"
- Simple installation: Pre-drill with 5/16" dia. masonry bit, then tap flush with hammer
- No pins, screws or adhesives required

PMF Size	Insulation Thickness
2"	1/2" - 3/4"
2 3/4"	1" - 1 1/2"
3 1/2"	1 1/2" - 2"
4 1/2"	2 1/2" - 3"
5"	3 1/2" - 4"
6 1/4"	4 1/2" - 5"

THERMAL-GRIP® BRICK-TIE WASHER



APPLICATIONS

- Typical anchor spacing of 16" x 16" (Check with local building codes)
- Dual prongs for easy "on-the-wall" anchor assembly
- 2" dia. solid cap for air barrier performance

For more information on all
Hunter Xci products,
visit www.hunterpanels.com.

