

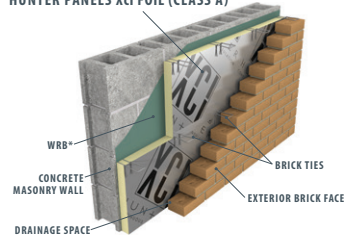


HUNTER
CONTINUOUS INSULATION

Hunter Panels Xci Product Line

Hunter Panels Xci polyiso products meet the continuous insulation standards prescribed in the current ASHRAE and IECC report for commercial exterior wall applications and IBC Building Code Chapter 26. Products have been NFPA 285 tested with a wide assortment of wall assemblies. Hunter Panels Xci polyiso products provide continuous insulation (ci) for FRT wood frame, steel stud, CMU and concrete exterior wall constructions.

HUNTER PANELS Xci FOIL
HUNTER PANELS Xci FOIL (CLASS A)



Hunter Panels Xci Foil

Polyiso Insulation Manufactured On-Line to Foil Facers

- Available thicknesses 1"–4", R-values 6.5–27.0
- Suitable for masonry cavity wall applications

NFPA 285 Compliant
Assemblies Available

Hunter Panels Xci Foil (Class A)

Polyiso Insulation Manufactured On-Line to Fiberglass Reinforced Foil Facers

- Can be installed directly on steel studs in a variety of wall assemblies without the need for gypsum sheathing
- Flame Spread <25 per ASTM E 84
- Available thicknesses 1"–4", R-values 6.3–25.2

NFPA 285 Compliant
Assemblies Available

HUNTER PANELS Xci 286



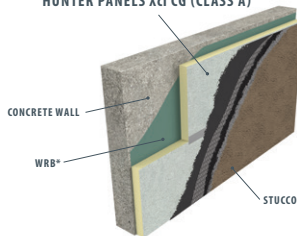
Hunter Panels Xci 286

Polyiso Foam Core Manufactured On-Line to Glass Fiber Reinforced Foil Facers

- Available thicknesses 1"–3.5", R-values 6.3–22.0
- NFPA 286 tested for exposed applications for interior wall or ceiling
- Washable white reinforced foil face on one side for light reflectance where desired. Either side can be left exposed.

NFPA 285 Compliant
Assemblies Available

HUNTER PANELS Xci CG
HUNTER PANELS Xci CG (CLASS A)



Hunter Panels Xci CG

Polyiso Insulation Manufactured On-Line to Premium Performance Coated Glass Facers

- Can be installed directly on steel studs in a variety of wall assemblies without the need for gypsum sheathing
- Available thicknesses 1"–4", R-values 6.0–25.0

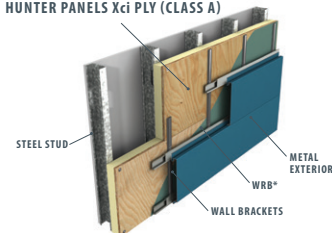
NFPA 285 Compliant
Assemblies Available

Hunter Panels Xci CG (Class A)

- Can be installed directly on steel studs in a variety of wall assemblies without the need for gypsum sheathing
- Flame Spread <25 per ASTM E 84
- Available thicknesses 1"–4", R-values 6.0–25.0

NFPA 285 Compliant
Assemblies Available

HUNTER PANELS Xci PLY
HUNTER PANELS Xci PLY (CLASS A)



Hunter Panels Xci Ply

Polyiso Insulation Bonded to Fire Treated Plywood

- Can be installed directly on steel studs in a variety of wall assemblies without the need for gypsum sheathing
- Optimal substrate for mechanically attaching cladding materials
- Available thicknesses 1.6"–4.6", R-values 6.8–25.8 with 5/8" plywood
- Available thicknesses 1.7"–4.7", R-values 7.0–26.0 with 3/4" OSB
- Approved for use as structural insulated sheathing up to 2.7" thickness when applied to wood studs

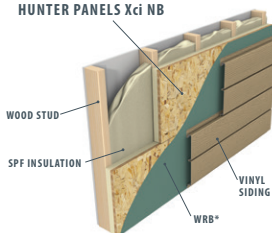
NFPA 285 Compliant
Assemblies Available

Hunter Panels Xci Ply (Class A)

- Can be installed directly on steel studs in a variety of wall assemblies without the need for gypsum sheathing
- Flame Spread <25 per ASTM E 84
- Available thicknesses 1.6"–4.6", R-values 6.8–25.8 with 5/8" plywood
- Available thicknesses 1.7"–4.7", R-values 7.0–26.0 with 3/4" OSB
- Approved for use as structural insulated sheathing up to 2.7" thickness when applied to wood studs

NFPA 285 Compliant
Assemblies Available

HUNTER PANELS Xci NB



Hunter Panels Xci NB

Polyiso Insulation Bonded to OSB or Plywood

- Can be installed directly on steel studs in a variety of wall assemblies without the need for gypsum sheathing
- Optimal substrate for mechanically attaching cladding materials
- Available thicknesses 1.5"–4.5", R-values 6.6–25.6 with 7/16" OSB
- Available thicknesses 1.6"–4.6", R-values 6.8–25.8 with 3/8" plywood
- Approved for use as structural insulated sheathing up to 2.7" thickness when applied to wood studs

*The location and number of WRBs in the wall assembly are determined by the architect. Contact Hunter Panels for a list of approved WRBs.