



HUNTER
CONTINUOUS INSULATION

Hunter Xci Tech Topic #110

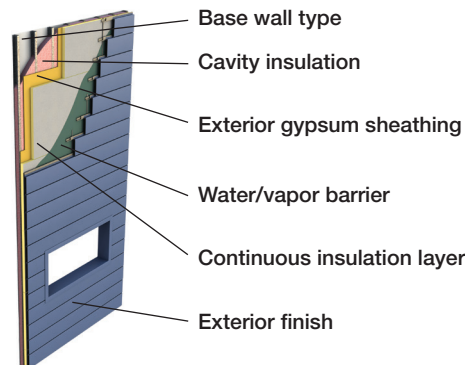
NFPA 285 Testing and Products Exemptions

Question: Is Mineral Wool Exempt from NFPA 285 Testing?

Answer: Mineral wool manufacturers are promoting their product as NFPA 285 exempt. Mineral wool is a non-combustible material and therefore does not trigger the need for NFPA 285 code compliance but many popular assemblies use materials such as claddings and AVB's that must test for the 285 even when used with mineral wool.

The NFPA 285 test is a standardized fire test procedure for evaluating the suitability of exterior, non-load bearing wall assemblies and panels used as components of wall assemblies that are constructed using combustible materials or that incorporate combustible components for installation on buildings where the exterior walls are required to be non-combustible. The NFPA 285 fire test is an assembly test, not a component test. All details of an approved assembly must be strictly followed to obtain the required performance. Therefore, no individual product is exempt for the NFPA 285 assembly test.

■ Wall Assembly Components Included in the NFPA 285 Test



Question: What Triggers the NFPA 285 Test Compliance?

Answer: Air and Water Barriers

- Section 1403.5

Combustible Claddings

- EIFS Section 1408.2
- MCM Section 1407.10
- FRP Section 2612.5
- HPL Section 1509.10

Foam Plastic Insulation

- Section 2603.5.5